

Power the green energy future



**GUANGDONG AOKLY GROUP CO., LTD.**

📍 Production base: High-tech Industrial Development Zone, Yingde City, Guangdong Province, China

📍 Overseas sales center: Room 110, Block B, Jianpeng Road 402, Baiyun District, Guangzhou

TEL: +86-20-86860028/86861998

FAX: +86-20-86878822

HTTP: WWW.AOKLY-BATTERY.COM

E-mail: Sales@aokly-battery.com



# VRLA BATTERY

VALVE REGULATED LEAD ACID BATTERY





Office building

# Company Profile

Guangdong Aokly Group Co., Ltd was promoted from Yingde Aokly Power Co.,Ltd , and Yingde Aokly Power Co., Ltd was established on base of former Guangdong Zeliang Storage Battery Co., Ltd since 1996. In September of 2021, for the realization of enterprise globalization strategy, and to further improve the overseas market share, Aokly Power has promoted to Aokly Group , The area of Aokly Group has covering more than 333,500m<sup>2</sup> in Yingde Huaqiao Industrial Zone, and total investment capital amount is over 2 Billion RMB. Aokly Group has established modern production bases. There are 4 production bases in Aokly Group. Production Base No.1 and No.2,former Guangdong Zeliang Storage Battery Co., Ltd. Located in Yingyuan industrial zone, Qingyuan city, Guangdong province. Production Base No.3, Hongshu Battery Yingde Co., Ltd. Located in Yingde city, Guangdong province. Production Base No.4 located in Huaqiao industrial zone, Yingde city.

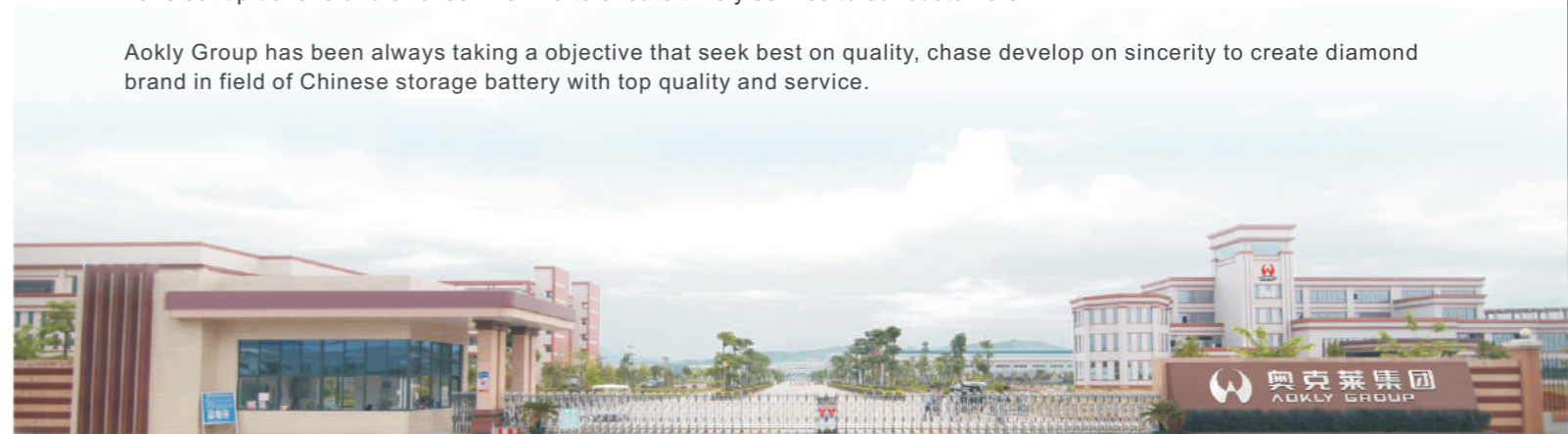
With 25 years' experience in Lead Acid battery industry, Guangdong Aokly Group Co., Ltd is currently one of the largest enterprises of storage battery for research and development, production and sales. It mainly produces Fixed Valve Regulated Lead Acid battery, small sized VRLA battery, Golf cart battery, Electric vehicle battery, Starting lead acid storage battery. Aokly Group has over 90 experienced researchers, technicians and managing talents, and importing the most advanced automatic production equipment as well as testing equipment. Furthermore, fully automatic production lines for producing sealed maintenance free storage battery have been in regular operation. Aokly Group imported the automatic machinery from Canada Teck(British TBS), Italy Sovema, Korea Moojin service, Germany Digator, which are most top advanced in the world. Aokly Group present annual capacity can reach 13 Million KVAH and 80K pcs VRLA battery a month .

The product adopts unique producing technology according to perfect quality-control system to arrange production and have respectively passed ISO9001 & ISO 14001 approval in national quality control system and environment system. Meanwhile it gain title national inspection-free product, furthermore be approved by UL, CE, ROHS and the complete IEC60095 testing etc. The battery are widely used in Uninterruptible Power Supplies (UPS), Electric Tools, Medical Equipment, Emergency lighting system, Control System, Communication System, Electric Power System, Solar Power system, Wind Power system, Automobile, Electric vehicle, Golf cart, Tourist Car, Farming Vehicles, etc. They have been sold well both at domestic and overseas market. More than 60 % of sale is for overseas market. In domestic market, we have set up dozens of branches in China to ensure timely service to our customers.

Aokly Group has been always taking a objective that seek best on quality, chase develop on sincerity to create diamond brand in field of Chinese storage battery with top quality and service.



Production Base No.1/2/3/4

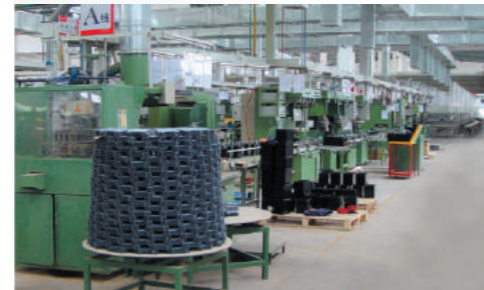




# Factory Review



Production Capacity



**PRODUCTION  
BASE:  
333,500  
SQM**

One of the largest manufacturing bases  
Of storage battery in the south china



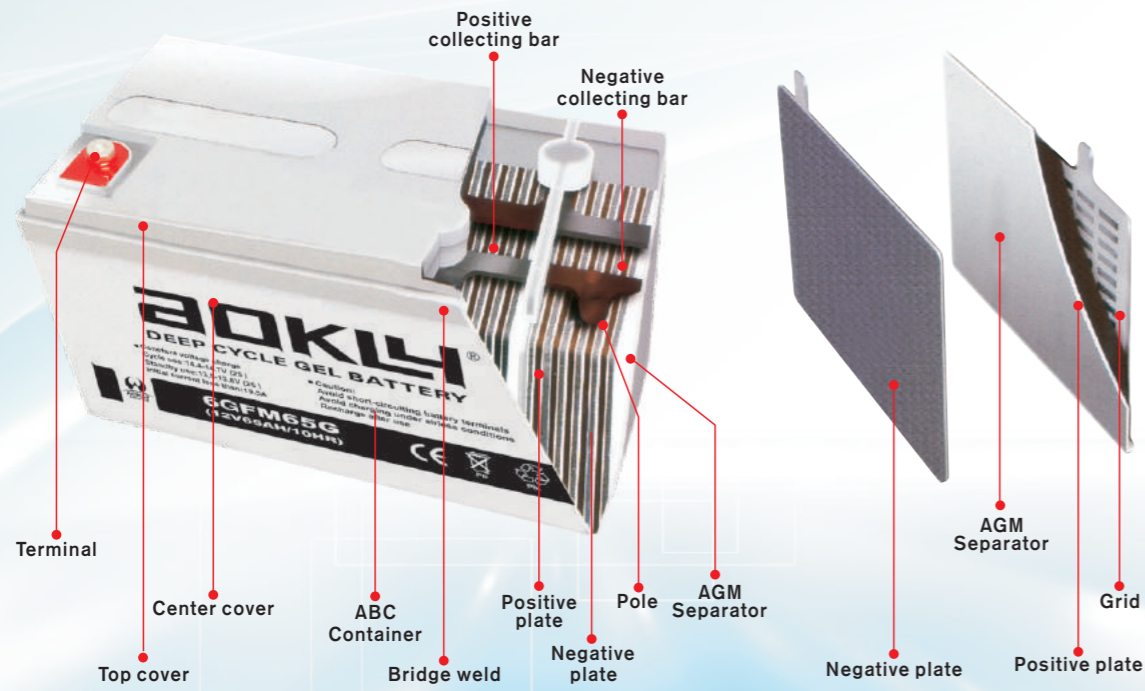
Details determine quality.  
Quality is our character.

Aokly people know the power of technology, regard 20 years as one day and spur with long accumulation. Preparing for every exceed power to continually develop its quality, promote the continuous development of company. Aokly possesses a professional R&D force, with more than 20 technicians, including 5 senior engineers with 35 years experiences more on lead acid battery. Aokly choose impeccable quality control systems, with a strong research teams, strict management systems for many process such as raw and auxiliary material purchasing, product promotion, production, inspection and so on. All the products will be inspected by the company or clients standard before delivery. We not only do our best to provide high quality product but also provide timely and thoughtful service supporting for customer.

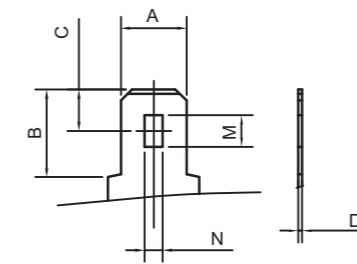


# Features

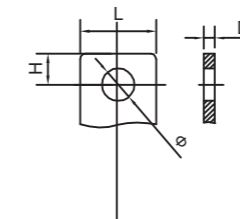
# Terminal Drawing



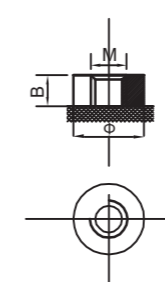
1. Adopting low-calcium&high-tin alloy grid, high anti-corrosive performance, lower battery gas evolution;
2. With special lead paste formula, our batteries have good endurance cycle capability and charging acceptance and strong deep cycle good recovery performance;
3. The fumed silica that is adopted as the key raw material of gel electrolyte is produced in Germany;
4. Batteries have long service life, good deep discharging cycle capability;
5. Gel batteries have better heat dissipation than AGM sealed batteries, reduced the possibility of not easy to have thermal runaway;
6. The self-discharge rate gel batteries is less than 1%/month;
7. The uniform part of gel battery electrolyte inside battery equally distributed has no layering phenomenon and the electrolyte is not readily not easy to dry up;
8. Battery production adopts high purity raw material, advanced manufacturing equipment to ensure battery performance stability and consistency;
9. Battery electrolyte contains silica solludox, so there is no dissociative acid or layering phenomenon inside, ensuring the good low temperature performance and service life of batteries;
10. The design life of standby use of batteries at 25°C is over 10 years.



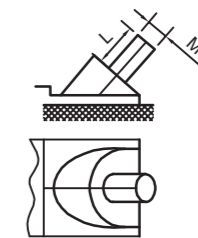
Faston Tab						
Type	A mm	B mm	C mm	D mm	M mm	N mm
F1	4.75	6.35	3.15	0.80	2.30	1.30
F2	6.35	7.80	3.40	0.80	2.50	1.50



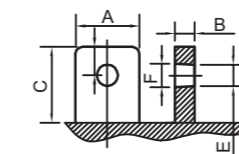
L size terminal				
Type	Φ mm	D mm	L mm	H mm
F16	4	2	8	3.5
F17	6	3	14	5.7
F18	18	5	8	8
F19	12	2	12	12



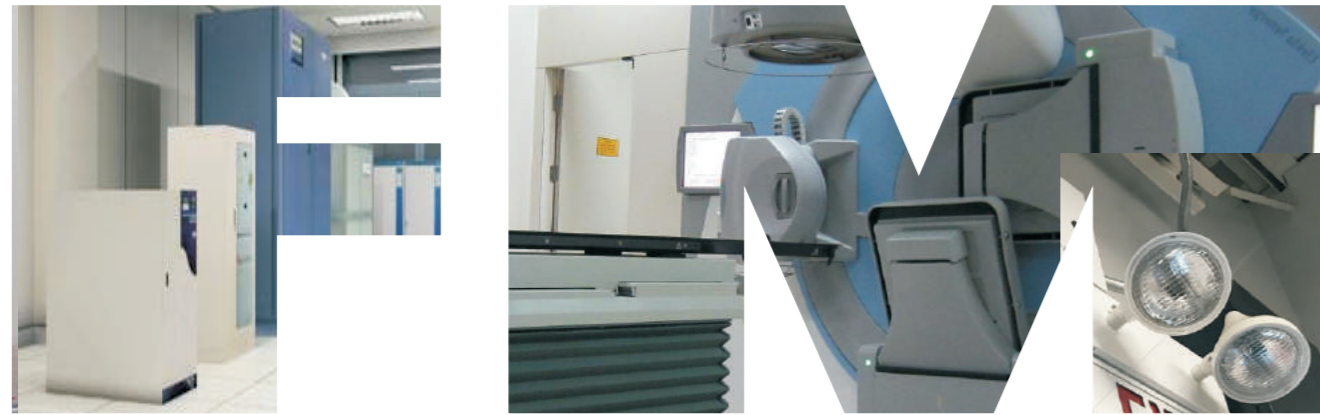
Cooper terminal			
Type	Φ mm	B mm	M mm
F3	16	3	6
F4	16	5	6
F5	16	5	8
F6	18	5	8
F7	20	5	8



Front terminal		
Type	M mm	L mm
F20	8	11.3



Lead terminal						
Type	A±1 mm	B±0.5 mm	C±1 mm	D±0.5 mm	E±0.2 mm	F±0.2 mm
F8	22.5	6.6	21.0	12.0	8.1	8.3
F9	26.6	8.0	22.5	10.5	7.8	8.8
F10	26.4	8.2	19.5	9.2	8.0	9.2
F11	27.0	8.3	25.5	12.0	9.0	9.8
F12	19.0	16.0	24.0	11.5	9.0	9.8
F13	17.0	7.0	25.5	12.0	9.0	9.8
F14	18.0	6.0	24.0	11.5	9.0	9.8
F15	20.0	7.0	16.0	7.0	6.8	6.0



# Series

## Summary

FM series is the general purpose battery with 5 years design life for float service. It meets IEC standard. With updated AGM valve regulated technology and high-purity raw materials, the battery has reliable standby service life.

It is suitable for UPS/EPS, medical equipment, emergency light and security systems .

## Product Features

- ⚡ Capacity range:1.2Ah-26Ah
- ⚡ Voltage class:6v/12v
- ⚡ Long design life(25°C):5 years
- ⚡ Low self-discharge rate: ≤3%/month
- ⚡ Good high rate discharge performance
- ⚡ High sealed reaction efficiency:≥99%
- ⚡ Wide operation temperature: -20°C~60°C
- ⚡ Structure:compact design,shorter internal connectors between cells, thus low internal resistance
- ⚡ Plate:Pasted flat type
- ⚡ Terminal:two or more types terminals are available
- ⚡ Separator:using improved AGM separator, makes low internal resistance & high assembling pressure to increase cycle life;
- ⚡ Battery container:made of high strength ABS(UL94-HB)and UL94-V0 is optional;
- ⚡ Terminal sealing:double sealing technic (mechanical +epoxy glue).



## FM Series Application

Small UPS  
Emergency Light  
Security System  
Toys  
Medical



## 12Voltage FM Series Battery Range Specifications

NO.	ITEMS	VOLTAGE	CAPACITY	DIMENSION(mm)				GROSS WEIGHT	TERMINAL
	NO	VOLT	AH/20HR	Length	Width	Height	Total Height	(KGS)	TYPE
1	3-FM-1.2	6	1.2	97	24	50	55	0.29	F1
2	3-FM-3.2	6	3	134	35	60	65	0.65	F1
3	3-FM-4	6	4	70	47	102	107	0.63	F1
4	3-FM-4.5	6	4.5	70	47	102	107	0.82	F1
5	3-FM-7	6	7	151	34	95	100	1.1	F1
6	3-FM-10	6	10	151	34	95	100	1.52	F1
7	3-FM-12	6	12	151	50	95	100	1.75	F1
8	6-FM-1.3	12	1.3	97	44	51	56	0.57	F1
9	6-FM-2.3	12	2.3	97	44	51	56	1	F1
10	6-FM-3.3	12	3.3	97	44	51	56	1.35	F1
11	6-FM-4	12	4	90	70	102	107	1.53	F1
12	6-FM-4.5	12	4.5	90	70	102	107	1.65	F1
13	6-FM-7	12	7	152	65	95	100	2	F1/F2
14	6-FM-9	12	9	152	65	95	100	2.45	F2
15	6-FM-10	12	10	152	65	113	118	3.1	F1/F2
16	6-FM-12	12	12	152	100	97	102	3.5	F1/F2
17	6-FM-18	12	18	181	77	167	167	5.4	F13
18	6-FM-20	12	20	181	77	167	167	6.1	F14
19	6-FM-22	12	22	181	77	167	167	6.32	F14
20	6-FM-22	12	22	181	77	167	167	6.18	F14
21	6-FM-24	12	24	183	78	167	167	7.15	F14
22	6-FM-26	12	26	177	167	126	126	9.08	F15

# GFM Series

## Summary

GFM series is the general purpose battery with 10 years design life in float service. With up-dated AGM valve regulated technology and high-purity raw materials, the GFM series battery maintains high consistency for better performance and reliable standby service life.

It is suitable for UPS/EPS, medical equipment, emergency light and security system applications.

## Product Features

- ⚡ Capacity range: 33Ah-250Ah
- ⚡ Voltage class: 12V
- ⚡ Long design life(25°C): 10 years
- ⚡ Low self-discharge rate: ≤3%/month
- ⚡ Good high rate discharge performance
- ⚡ High sealed reaction efficiency: ≥99%
- ⚡ Wide operation temperature: -20°C~60°C
- ⚡ Structure: compact design, low internal resistance,
- ⚡ Plate: Pasted flat type
- ⚡ Terminal :two or more types terminals are convenient for selection higher assembling pressure to increase deep cycle life;
- ⚡ Battery container: made of high strength ABS(UL94-HB) and UL94-V0 is optional;
- ⚡ Terminal sealing: double sealing technic (mechanical+epoxy glue).



## GFM Series Application

- UPS/EPS
- Emergency Light
- Security System
- Medical



## 12Voltage FM Series Battery Range Specifications

NO.	ITEMS	VOLTAGE	CAPACITY	DIMENSION(mm)				GROSS WEIGHT	TERMINAL
	NO	VOLT	AH/10HR	Length	Width	Height	Total Height	(KGS)	TYPE
1	6-GFM-33	12	33	196	131	172	172	9.5	F3
2	6-GFM-38	12	38	198	166	170	170	12.1	F3
3	6-GFM-40	12	40	198	166	170	170	12.4	F3/F16
4	6-GFM-55	12	55	229	138	210	228	14.9	F4
5	6-GFM-65	12	65	348	168	178	178	21.4	F4
6	6-GFM-75	12	75	260	168	209	227	23.4	F4
7	6-GFM-90	12	90	307	169	208	227	28.5	F4/F8
8	6-GFM-100	12	100	329	172	214	236	30.1	F4/F8
9	6-GFM-120	12	120	409	177	207	234	34.9	F9
10	6-GFM-150	12	150	483	170	240	240	42.5	F4/F10
11	6-GFM-200	12	200	522	240	218	223	58.5	F5/F11
12	6-GFM-250	12	250	522	268	218	245	63.5	F5/F11

# GFM 2V Series

## Summary

GFM 2V series is the general purpose battery with 18 years design life in float service. With heavy duty grids, thicker plates, special additives and updated AGM valve regulated technology, the GFM 2V battery provides consistent performance and long service life. The new grid design effectively reduces the internal resistance, which provides higher specific energy density and excellent high rate discharge characteristics.

It is suitable for communication back-up power and EPS/UPS applications.

## Product Features

- ⚡ Capacity range:200Ah-3000Ah
- ⚡ Voltage class:2V
- ⚡ Long design life(25°C): 18 years
- ⚡ Polarity sign:symmetrical and more clear
- ⚡ Low self-discharge rate:≤3% per month
- ⚡ High recombination efficiency:≥99%
- ⚡ Compact structure and high specific energy
- ⚡ Wide operation temperature:-20-60°C
- ⚡ Grid: thicker grid and radiative grid structure:
- ⚡ Positive plate : Pasted flat type, latest grid alloy
- ⚡ Separator:AGM separator with high adsorptive and low resistance;
- ⚡ Battery container:High strength ABS(UL94-HB)and UL 94-V0 is optional;
- ⚡ Post sealing:patent multi-layer post sealing with M8 copper insert terminal;
- ⚡ Safety Valve: sensitive operate pressure and reliable equipped with explosion-proof arrester and acid filter.



## GFM 2V Series Application

Telecommunication  
UPS/EPS  
Power storage plant  
Utility



## Main Parameters

NO.	ITEMS	VOLTAGE	CAPACITY C <sub>10</sub>	DIMENSION(mm)				GROSS WEIGHT	TERMINAL
	NO	VOLT	AH/10HR	Length	Width	Height	Total Height	(KGS)	TYPE
1	GFM-200	2	200	170	110	330	350	14.3	F7
2	GFM-300	2	300	171	151	330	366	20.3	F7
3	GFM-400	2	400	211	176	329	367	27	F7
4	GFM-500	2	500	241	172	330	365	32.1	F7
5	GFM-600	2	600	301	175	331	366	39.1	F7
6	GFM-800	2	800	410	176	330	365	48.1	F7
7	GFM-1000	2	1000	475	175	327	350	64.2	F7
8	GFM-1200	2	1200	475	175	327	365	71	F7
9	GFM-1500	2	1500	401	351	342	378	101	F7
10	GFM-2000	2	2000	491	351	343	383	132	F7
11	GFM-3000	2	3000	712	353	341	382	192	F7

# GFM-F Series

## Summary

GFM-F(Front Terminal) Series is specially designed for telecom use with 10+ years design life in float service. By adopting a new AGM separator and centralised venting system, the battery can be installed in any position while maintaining high reliability. The dimensions of the GFM-F series is designed for 19" and 23" cabinet installation

It is suitable for UPS/EPS applications.

## Product Features

- ⚡ Capacity range:40Ah-200Ah
- ⚡ Voltage class:12V
- ⚡ Long design life (25°C) : 10+years
- ⚡ Low self-discharge rate: ≤3%month
- ⚡ Good high rate discharge performance
- ⚡ High sealed reaction efficiency: ≥99%
- ⚡ Wide operation temperature range:-20°C-60°C
- ⚡ Narrow structure:each cell has same heat dissipation efficiency.Thus good to prevent "thermal runaway";
- ⚡ Plate:Pasted flat type
- ⚡ Front terminal is convenient for connection and maintenance;
- ⚡ Centralized vent system:battery internal gas can be vented out of the system.and flame arrester is equipped:
- ⚡ Terminal cover:avoiding short circuit and dust.the inspection hole is available for maintenance:
- ⚡ Separator:use improved AGM separator, makes lower resistance,higher assembling pressure to increase deep cycle life:
- ⚡ Terminal sealing:double sealing technic(mechanical+epoxy glue).



## GFM-F Series

### Application

Telecommunication  
Emergency Light  
Photovoltaic/Wind Energy



## Main Parameters

NO.	ITEMS	VOLTAGE	CAPACITY C <sub>10</sub>	DIMENSION(mm)				GROSS WEIGHT	TERMINAL
	NO	VOLT	AH/10HR	Length	Width	Height	Total Height	(KGS)	TYPE
1	6-GFM-40F	12	40	277	106	222	222	15.5	F3
2	6-GFM-55F	12	55	277	106	222	222	17.3	F4
3	6-GFM-70F	12	70	564	114	187	187	25.5	F4
4	6-GFM-75F	12	75	564	114	187	187	26	F4
5	6-GFM-90F	12	90	508	110	238	238	29	F4
6	6-GFM-100F	12	100	508	110	238	238	30	F4
7	6-GFM-100F	12	100	394	110	286	286	31	F4
8	6-GFM-120F	12	120	551	110	288	288	41.1	F20
9	6-GFM-150F	12	150	551	110	288	288	46.5	F20
10	6-GFM-180F	12	180	560	126	316	316	52.8	F20
11	6-GFM-200F	12	200	550	126	330	330	62	F5



# GFM-D Series

## Summary

GFM-D series is specially designed for frequent cyclic performance. By using strong grids and specially designed active material, the GFM-D series battery offers more cyclic life than standby series. It is suitable for solar energy systems, marine and RV etc.

## Product Features

- ⚡ Capacity range: 33Ah-225Ah
- ⚡ Voltage class: 12V
- ⚡ Long design life (25°C) : 10 years
- ⚡ Low self-discharge rate: ≤3%/month
- ⚡ Good high rate discharge performance
- ⚡ High sealed reaction efficiency: ≥99%
- ⚡ Wide operation temperature range: -20°C~60°C
- ⚡ Structure: compact design, shorter internal connectors between cells, thus low internal resistance
- ⚡ Plate: Pasted flat type
- ⚡ Terminal: two or more types terminal are convenient for selection
- ⚡ Vent system: gases can be vented through flame arrester/filter:
- ⚡ Separator: using improved AGM separator, makes lower resistance higher assembling pressure to increase deep cycle life;
- ⚡ Battery container: made of high strength ABS (UL94-HN) and UL94-VO is optional:
- ⚡ Terminal sealing: double sealing technic (mechanical+epoxy glue).



## GFM-D Series

### Application

Photovoltaic/Wine Energy  
UPS/EPS140  
Marine/Boat  
Light Electric Power Supply



## Main Parameters

NO.	ITEMS	VOLTAGE	CAPACITY	DIMENSION(mm)				GROSS WEIGHT	TERMINAL
	NO	VOLT	AH/10HR/20HR	Length	Width	Height	Total Height	(KGS)	TYPE
1	6-GFM-33D	12	33	196	131	155	172	9.8	F3
2	6-GFM-38D	12	38	198	166	170	170	13.7	F3
3	6-GFM-40D	12	40	198	166	170	170	13.8	F3
4	6-GFM-55D	12	55	229	138	210	228	15.2	F4
5	6-GFM-65D	12	65	348	168	178	178	21.3	F4
6	6-GFM-70D	12	70	260	168	209	227	23.5	F4
7	6-GFM-90D	12	90	307	169	208	227	28.5	F4/F8
8	6-GFM-100D	12	100	329	172	214	236	30	F4/F8
9	6-GFM-120D	12	120	409	177	207	234	34.8	F9
10	6-GFM-150D	12	150	483	170	240	240	42.4	F4/F10
11	6-GFM-200D	12	200	522	240	218	244	60.6	F5/F11
12	6-GFM-225D	12	225	522	240	218	244	66.5	F5/F11

# GFM-G Series

## Summary

GFM-G (Deep Cycle GEL) series is designed for frequent cyclic charge and discharge applications under extreme environments. By using strong grids, high-purity lead and patented Gel electrolyte, GFM-G series offers excellent recovery after deep discharge under frequent cyclic discharge, and deliver 400 cycles at 100% DOD, suitable for solar, CATV, marine, RV and deep discharge UPS etc..

## Product Features

- ⚡ Capacity range: 33Ah-3000Ah
- ⚡ Voltage class: 12V
- ⚡ Long design life (25°C): 12 years for 12V, 18 years for 2V
- ⚡ Low self-discharge rate: ≤ 2.5% per month
- ⚡ High sealed reaction efficiency: ≥ 98%
- ⚡ High specific energy density
- ⚡ Excellent charge acceptance
- ⚡ Wide operation temperature: -40°C ~ +60°C
- ⚡ Grid: patent primary and secondary grid structure design;
- ⚡ Positive plate: Pasted flat type, high temperature and humidity formation technic;
- ⚡ Separator: high porosity AGM separator with good cyclic characteristics and lower resistance;
- ⚡ Battery container: High strength ABS (UL94-HB) and UL94-V0 is optional;
- ⚡ Safety Valve: narrow operate pressure range and equipped with explosion-proof arrester and acid filter.



## GFM-G Series Application

Telecommunication  
Photovoltaic/Wind Energy  
UPS  
Cable TV



## Main Parameters

NO.	ITEMS NO	VOLTAGE	CAPACITY C <sub>10</sub>	DIMENSION(mm)				GROSS WEIGHT	TERMINAL
		VOLT	AH/10HR	Length	Width	Height	Total Height	(KGS)	TYPE
1	6-GFM-33G	12	33	196	131	172	172	10	F3
2	6-GFM-38G	12	38	198	166	187	187	12.1	F3
3	6-GFM-40G	12	40	198	166	170	170	13.7	F3
4	6-GFM-55G	12	55	229	138	210	228	15.2	F4
5	6-GFM-65G	12	65	348	168	178	178	21.1	F4
6	6-GFM-75G	12	75	260	168	209	227	23.8	F4
7	6-GFM-90G	12	90	307	169	208	227	28.5	F4/F8
8	6-GFM-100G	12	100	329	172	214	243	31.5	F4/F8
9	6-GFM-120G	12	120	409	177	207	234	35.3	F9
10	6-GFM-150G	12	150	483	170	240	240	44.2	F4/F10
11	6-GFM-200G	12	200	522	240	218	223	60.1	F5/F11
12	6-GFM-250G	12	250	522	268	218	223	66	F5/F11
13	GFM-200G	2	200	170	110	330	350	14.3	F7
14	GFM-300G	2	300	171	151	330	366	20.3	F7
15	GFM-400G	2	400	211	176	329	367	27	F7
16	GFM-500G	2	500	241	172	330	365	32.1	F7
17	GFM-600G	2	600	301	175	331	366	39.1	F7
18	GFM-800G	2	800	410	176	330	365	48.1	F7
19	GFM-1000G	2	1000	475	175	327	365	64.2	F7
20	GFM-1200G	2	1200	475	175	327	365	71	F7
21	GFM-1500G	2	1500	401	351	342	378	101	F7
22	GFM-2000G	2	2000	491	351	343	383	132	F7
23	GFM-3000G	2	3000	712	353	341	382	192	F7

# OPzV Series

## Summary

Valve Regulated Tubular Plate GEL Batteries for Stationary Applications  
AOKLY's OPzV batteries are characterized by maintenance-free, long service life, excellent reliable performance even in harsh conditions (high operating temperature or unstable power network) and durability under cyclic use, thus providing a premium efficient and cost effective energy solution.

Optimum design, according to DIN international standards, exclusive use of high quality raw materials, robust construction and state of the art manufacturing processes make this OPzV range an ideal solution for high demanding stationary applications.

## Product Features

- ⚡ Capacity range(C<sub>10</sub>): 200-3000 Ah
- ⚡ Voltage class: 2V
- ⚡ Floating design life (25°C) : 20 years
- ⚡ Cycle life: >2000 at 80% DOD and 6000 at 25% DOD
- ⚡ Self discharge rate: ≤ 2% /month
- ⚡ High charge acceptance performance
- ⚡ Wide operation temperature: -40°C~70°C
- ⚡ Storage life :after fully charged,it can be stored about 2 years at 20°C
- ⚡ Good deep discharge recovery performance



## OPzV Series

### Application

Telecommunication  
Photovoltaic/Wind Energy  
UPS  
Power Storage Plant  
Military



## Main Parameters

NO.	ITEMS	VOLTAGE	CAPACITY	DIMENSION(mm)				GROSS WEIGHT	TERMINAL
	NO	VOLT	AH/10HR	Length	Width	Height	Total Height	(KGS)	TYPE
1	OPzV2-200	2	200	103	206	355	390	16.8	
2	OPzV2-250	2	250	124	206	355	390	20.5	
3	OPzV2-300	2	300	145	206	355	390	24.5	
4	OPzV2-350	2	350	124	206	471	506	28.5	
5	OPzV2-420	2	420	145	206	471	506	33	
6	OPzV2-490	2	490	166	206	471	506	38.5	
7	OPzV2-600	2	600	145	206	646	681	46.5	
8	OPzV2-770	2	770	254	210	471	506	56	
9	OPzV2-800	2	800	191	210	646	681	63	
10	OPzV2-1000	2	1000	233	210	646	681	77	
11	OPzV2-1200	2	1200	275	210	646	681	92	
12	OPzV2-1500	2	1500	275	210	796	831	110	
13	OPzV2-2000	2	2000	399	214	772	807	150	
14	OPzV2-2500	2	2500	487	212	772	807	190	
15	OPzV2-3000	2	3000	576	212	772	807	225	

# OPzS Series

## Summary

Vented Tubular Plate Batteries for Stationary Applications  
 AOKLY's OPzS batteries are characterized by low maintenance requirements, long service life and excellent capacity performance while operating in high temperature or unstable power network, thus providing a premium efficient and cost effective energy solution.  
 Optimized design, according to DIN international standards, exclusive use of high quality raw materials, robust construction and state of the art manufacturing process make the OPzS range the ideal solution for stationary application demanding high level of safety and reliability.

## Product Features

- ⚡ Capacity range(C<sub>10</sub>): 200-3000 Ah
- ⚡ Voltageclass: 2V
- ⚡ Floating design life (25°C) : 20 years
- ⚡ Cycle life: >2200 at 80% DOD and 6000 at 25% DOD
- ⚡ Self discharge rate: ≤5% /month
- ⚡ High charge acceptance performance
- ⚡ Wide operation temperature: -40°C~70°C
- ⚡ Good deep discharge recovery performance.



## OPzS Series

### Application

- Traction forklifts
- Traction electric vehicles
- Electric cars
- Photovoltaic / Wind Power



## Main Parameters

NO.	ITEMS	VOLTAGE	CAPACITY C <sub>10</sub>	DIMENSION(mm)				DRY WEIGHT	WET WEIGHT	TERMINAL
	NO	VOLT	AH/10HR	Length	Width	Height	Total Height	(KGS)	(KGS)	TYPE
1	OPzS2-200	2	200	103	206	355	410	13.3	17.6	
2	OPzS2-250	2	250	124	206	355	410	15.8	21.1	
3	OPzS2-300	2	300	145	206	355	410	18.5	24.5	
4	OPzS2-350	2	350	124	206	471	526	20.5	26.7	
5	OPzS2-420	2	420	145	206	471	526	24.5	33.6	
6	OPzS2-490	2	490	166	206	471	526	28	38.7	
7	OPzS2-600	2	600	145	206	646	701	34.4	46.4	
8	OPzS2-770	2	770	254	210	471	526	45.4	58.6	
9	OPzS2-800	2	800	191	210	646	701	47.6	64.3	
10	OPzS2-1000	2	1000	233	210	646	701	57.8	78	
11	OPzS2-1200	2	1200	275	210	646	701	68	91.8	
12	OPzS2-1500	2	1500	275	210	796	851	83.5	113.5	
13	OPzS2-2000	2	2000	399	214	772	827	112.8	153.4	
14	OPzS2-2500	2	2500	487	212	772	827	140.4	190.9	
15	OPzS2-3000	2	3000	576	212	772	827	166.7	226.8	



# ELECTRIC VEHICLE Battery

## Summary

EVF series is specially designed for frequent deep cycle discharge. By using the specially designed active material and strong grids, the EVF series battery offers reliable performance in high load situations and can deliver more than 400 cycles at 100% DOD. Suitable for mobility scooters, electric wheel chairs, golf buggies etc

## Product Features

- ⚡ Pb-Ca-Sn alloy, no Cd, environment-friendly;
- ⚡ High purity raw material and high performance AGM separator
- ⚡ Excellent low temperature property and vibration resistance;
- ⚡ Excellent cycle life and recovery performance during deep cycle use;
- ⚡ High strength ABS container and good impact resistance;
- ⚡ Sealed construction and Maintenance free.



## EVF Series Application

- Electric Bike
- Electric Motorcycle
- Wheelchair
- Electric Tools
- Golf car
- Electrical tractor
- Farm equipment



## Main Parameters

NO.	ITEMS	VOLTAGE	CAPACITY C20	CAPACITY C3	DIMENSION(mm)				GROSS WEIGHT	TERMINAL
	NO	VOLT	AH/20HR	AH/3HR	Length	Width	Height	Total Height	(KGS)	TYPE
1	3-EVF-10	6	15	10	151	50	95	100	2.2	F16
2	3-EVF-170	6	250	170	260	180	246	252	30	F7
3	3-EVF-200	6	295	200	260	180	270	275	36	F7
4	3-EVF-260	6	380	260	350	180	270	275	46	F7
5	3-EVF-300	6	440	300	295	178	346	351	55.6	F7
6	4-EVF-150	8	220	150	260	180	280	283	37.6	F7
7	6-EVF-7.5	12	11	7.5	152	65	113	118	3.1	F1
8	6-EVF-10	12	15	10	152	100	91	102	4.3	F1
9	6-EVF-17	12	25	17	181	77	167	167	6.4	F1
10	6-EVF-20	12	29	20	183	78	167	167	7.15	F1
11	6-EVF-24	12	35	24	177	167	126	126	9.08	F19
12	6-EVF-33	12	49	33	195	131	155	180	12.45	F19
13	6-EVF-40	12	59	40	197	166	170	170	14.8	F3
14	6-EVF-80	12	120	80	260	168	212	218	27.5	F4
15	6-EVF-100	12	145	100	332	174	216	224	35	F7
16	6-EVF-120	12	175	120	405	169	240	240	42.1	F7
17	6-EVF-150	12	220	150	481	170	240	240	52	F7
18	6-EVF-200	12	295	200	522	238	220	220	70	F7



# Series

## GOLF CART Battery

### Summary

EV series is specially designed for frequent deep cycle discharge. By using the specially designed active material and strong grids, the EV series battery offer reliable performance in high load situations and can deliver more than 500 cycles at 100% DOD. Suitable for golf cart, sightseeing cars, electric vehicle etc.

### Product Features

- ⚡ Pb-Sb-Sn-As alloy, no Cd, environment-friendly
- ⚡ Reliable deep circulated discharge performance ,the cycle life ≥500 times at 100% DOD
- ⚡ Low self-discharge characteristic and high output power.
- ⚡ Perfect performance on battery consistency
- ⚡ With tight assembly technology and excellent vibration resistance.



### EV Series Application

- Electric Bike
- Electric Motorcycle
- Wheelchair
- Electric Tools
- Golf car
- Electrical tractor
- Farm equipment



### Main Parameters

NO.	ITEMS	VOLTAGE	CAPACITY C <sub>20</sub>	CAPACITY C <sub>5</sub>	DIMENSION(mm)				DRY WEIGHT	WET WEIGHT	TERMINAL
	NO	VOLT	AH/20HR	AH/5HR	Length	Width	Height	Total Height	(KGS)	(KGS)	TYPE
1	3-EV-170	6	220	170	260	182	247	285	22.2	29.0	F12
2	3-EV-190	6	245	190	260	182	247	285	24.3	32.6	F12
3	3-EV-210	6	270	210	260	182	267	304	25.8	35.3	F12
4	4-EV-145	8	190	145	260	182	248	285	25.4	32.6	F12
5	6-EV-120	12	155	120	331	182	242	280	31.9	41.3	F12